

State of Wyoming Corner Record

(In compliance with the CORNER PERPETUATION and FILING ACT, Wyoming Statutes, 1997,
Section 33-29-140, et seq., and the rules and regulations of the Board of Registration
for Engineers and Professional Land Surveyors)

The reverse side of this form may be used if more space is needed.

The Record of the original survey and the citation of the source of the historical information (if the corner is lost or obliterated). The description of the corner monumentation evidence as found and/or the monument and it's accessories as established to perpetuate the location of this corner. A sketch of the relative location of this Monument, accessories, and reference points with the course and distance to adjacent corner (s) (if determined during this Survey). The Method and Rationale used for the reestablishment of lost and obliterated corner.

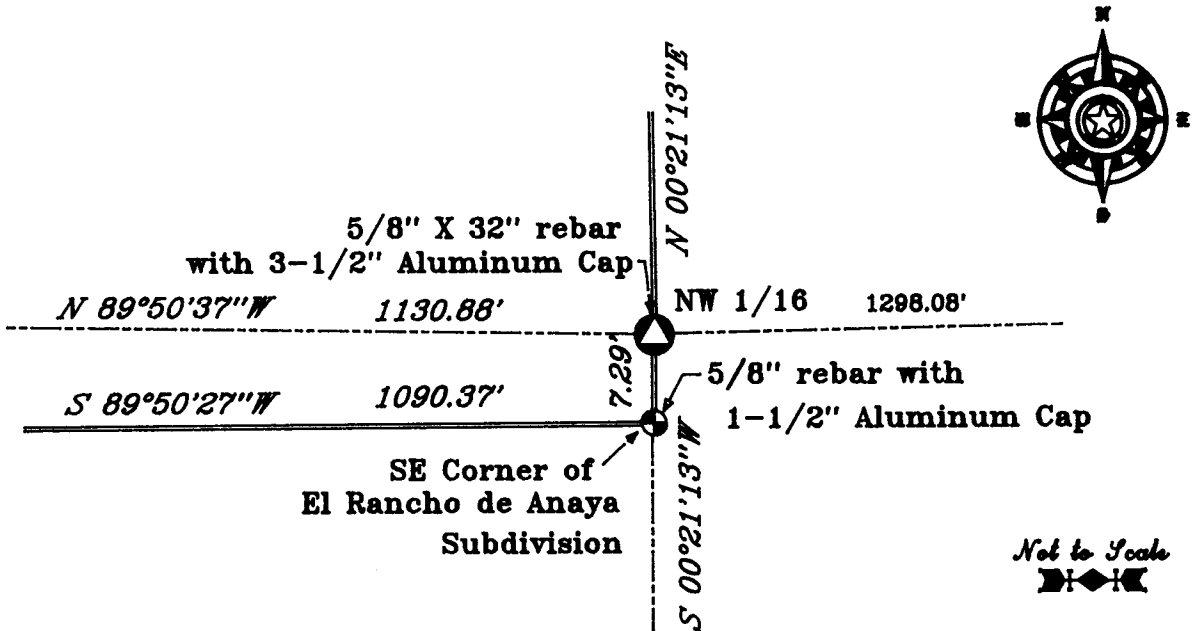
Note: GLO did Not set these corners during the Original Survey.
SET 5/8" X 32" REBAR WITH A 3-1/2" ALUMINUM CAP MARKED APPROPRIATELY AND REFERENCED AS SHOWN HEREON.

NAD 83~92

Lat: N 41°09'15.746"

Lon: W 104°14'59.042"

RECORDED 8/26/2009 AT 3:14 PM REC# 529432 BK# 2128 PG# 1422
DEBRA K. LATHROP, CLERK OF LARAMIE COUNTY, WY PAGE 1 OF 1



Date of Field Work: 31 July 2009

Office Reference: El Rancho de Anaya

Cross Index Diagram
T.14 N. R.61 W. 6th P.M.

1	2	3	4	5	6	7	8	9	10	11	12	13	14	15	16	17	18	19	20	21	22	23	24	25
A																								
B																								
C																								
D																								
E																								
F																								
G																								
H																								
I																								
J																								
K																								
L																								
M																								
N																								
O																								
P																								
Q																								
R																								
S																								
T																								
U																								
V																								
W																								
X																								
Y																								
Z																								

Firm/Agency, Address
Terrestrial Surveying & Mapping Co.
"Your Friendly Neighborhood Surveyor"
1127 Terry Ranch Road
Cheyenne, Wyoming 82007
Telephone Number: (307) 634-9360

This Corner Record was prepared by
me or under my direction and
supervision.

SEAL & SIGNATURE

Log T. Dwyer L.S.
August 2009
WYOMING

Corner Name NW 1/16th Section: 30

T.14 N. R.61 W. 6th P.M. Cross Index No.

2~S